



Bathing establishment Fact Sheet

Bathhouse name	SOLEADO
Address	Viale Roma,56
City	Marina di Pietrasanta (Lu)
Contacts	Tel. 39 3495444398 Email bagnosoleado@live.it
Website	https://www.bagnosoleado.it/

TESTED BY: [Handy Superabile - Social Promotion Association](#) in summer 2023

Please note The following information refers to the verification date shown at the bottom of each card. **The Association** is not responsible for any significant changes made by the property after the visit.

Summary

Bathing establishment Fact Sheet	1
Arrival at the facility.....	2
Private/public parking.....	2
Pathway from the parking lot to the main entrance	3
Reception.....	4
Bar/restaurant	4
Internal Pathways and common services.....	5
Internal Pathways	5
Toilet and shower accessible to guests with reduced mobility	6
Changing room	8
Beach.....	8
Children's play area	9
Swimming pool	9
Doctors' Offices/Healthcare Facilities	10



Project carried out with the contribution of the



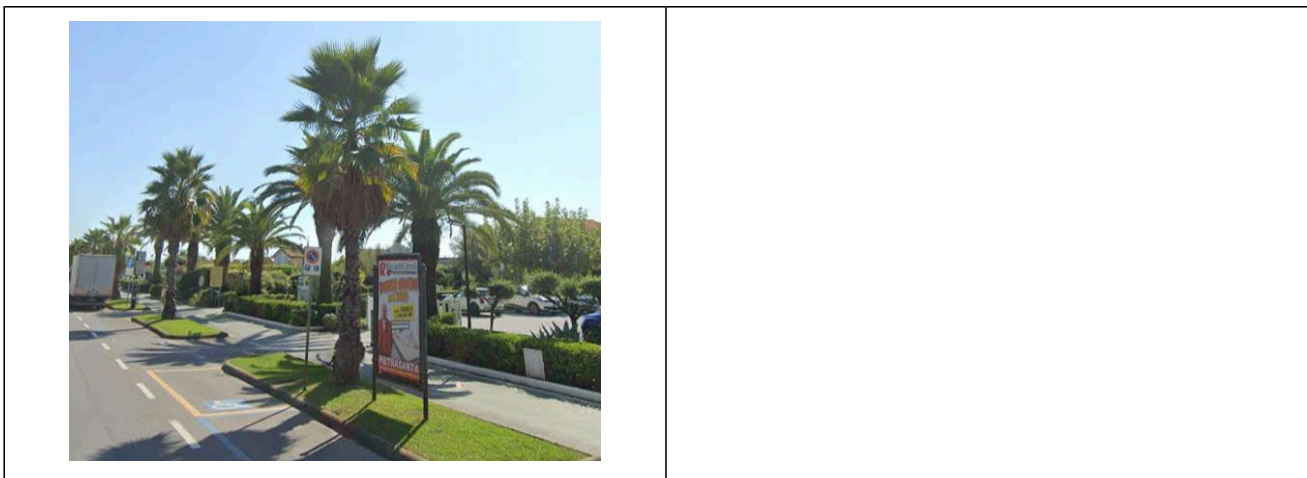


Arrival at the facility



Private/public parking

Presence of private parking	YES
Type of private car park	gravel
Presence of a parking space reserved for people with disabilities in the private car park	NO
Public parking nearby	YES
Type of public car park	asphalt
Presence of a parking space reserved for people with disabilities in the public car park	Choose an item.
	





Pathway from the parking lot to the main entrance

Pathway from the car park to the entrance	flat on a gravel surface that can make it difficult for wheelchair users to move around
There are markers and tactile maps	NO
Usable door/entrance width	more than 90 cm
	





Reception

Umbrella booking system	<input type="checkbox"/> Via web <input checked="" type="checkbox"/> By phone <input checked="" type="checkbox"/> On-site
Presence of multilingual staff	YES
Presence of plant plan with key to services available	NO
Presence of visuo-tactile map	NO
Bulletin board/information panels at an average height of 130 cm in a well-lit area and font size at least 14 dpi with a contrast ratio greater than 4.5:1	NO
The staff attended training courses on welcoming people with different disabilities	NO

Bar/restaurant

Type of venue	Bar/restaurant
Access to the premises	Flat
Usable door/entrance width	more than 90 cm
Bar counter	more than 100 cm
Types of tables	4-legged
Space underneath the tables from the floor	65 cm
Multilingual menu	NO
Menus with large print fonts	YES
Braille menu	NO
Table service for people with disabilities	YES
Availability of gluten-free food	<input checked="" type="checkbox"/> bread <input checked="" type="checkbox"/> pasta <input type="checkbox"/> biscuits <input checked="" type="checkbox"/> ice cream <input type="checkbox"/> Pre-packaged foods





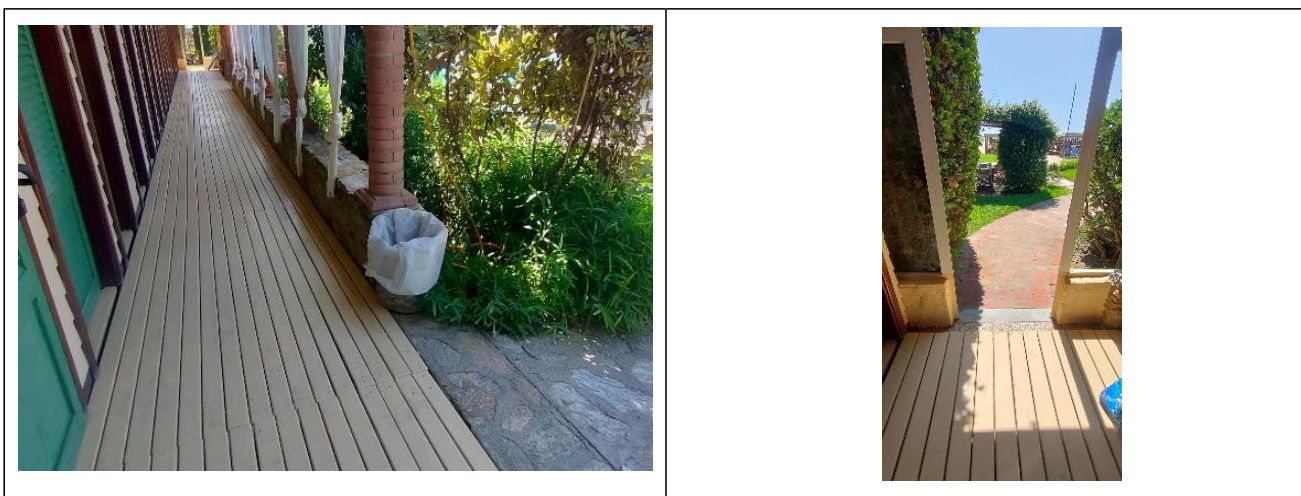
Internal Pathways and common services

Internal Pathways

Indicate whether the pathways connecting the entrance to the beach are flat or with ramps in addition to those already described

Obstacle-free paths





Toilet and shower accessible to guests with reduced mobility

Number of toilets accessible/usable by guests with reduced mobility	1
Access to the premises	by ramp length 115 cm, width 120 cm, slope 11.6%
Usable width of the entrance door	84 cm
WC height	52 cm
Open front toilet seat	YES
Support handles	on both sides
Flexible hand shower at the side of the toilet	NO
Free space on the sides of the toilet	left 23 cm on the right over 90 cm front 70 cm
Electric doorbell/phone	NO
Washbasin with space underneath for wheelchair	64 cm
Height from the ground on the bottom edge of the mirror	sufficient for use by wheelchair users
Baby changing table	YES





	
	
<p>Accessible shower available for guests with reduced mobility</p>	<p>Yes outdoor without canopy</p>
	







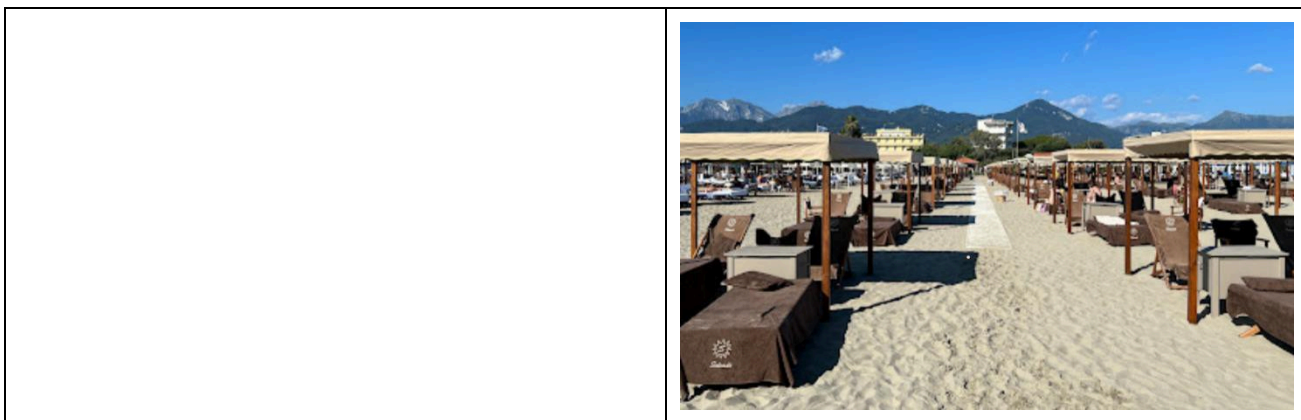
Changing room

Accessible changing room available for guests with reduced mobility	NO
---	----

Beach

Type of beach	sand
Access to the beach	Flat
Walkway to reach the umbrellas	YES
Type of walkway	Cement and PVC
Walkway width	100 cm
	
Removable Platform between the walkway and the umbrella station to facilitate the passage and parking wheelchair	YES
Amphibious beach chair available for helping people with reduced mobility to enjoy swimming (owned by the establishment or by association)	YES





Children's play area

Children's play area	missing
----------------------	---------

Swimming pool

The property has a swimming pool	YES
Access to the swimming pool	by ramp length 115 cm, width 120 cm, slope 11.6%
Useful width of the entrance gate	more than 90 cm
Access to the pool	with ladder
Bathing aids for guests with reduced mobility	Not present





Doctors' Offices/Healthcare Facilities

Hospitals near the facility	Ospedale Versilia SS1 Via Aurelia n. 335 55049 Lido di Camaiore LU Tel. 0584/6051
Other Healthcare Facilities	<p>Distretto Sanitario ASL 12 Pietrasanta Via Martiri S. Anna 11 Tel. 05846058823</p> <p>Croce Verde Via Risorgimento, 1 Forte dei Marmi Tel. 058484013 free dialysis and first aid service for white codes</p> <p>Emergency medical service Via Martiri S. Anna Tel. 0584 616774</p> <p>Misericordia Via Mazzini Pietrasanta Tel. 058470055</p> <p>Medical service "San Camillo" Nursing Home Via P.I. da Carrara, 37 Tel. 0584 7391</p> <p>Dialysis service c/o Croce Verde Viale Italico at the corner of Via Risorgimento Forte dei Marmi Tel. 058484013 affiliated with AUSL</p>

TESTED BY: Handy Superabile Social Promotion Association in summer 2023

